


elobau ®
s e n s o r technology

made in Germany

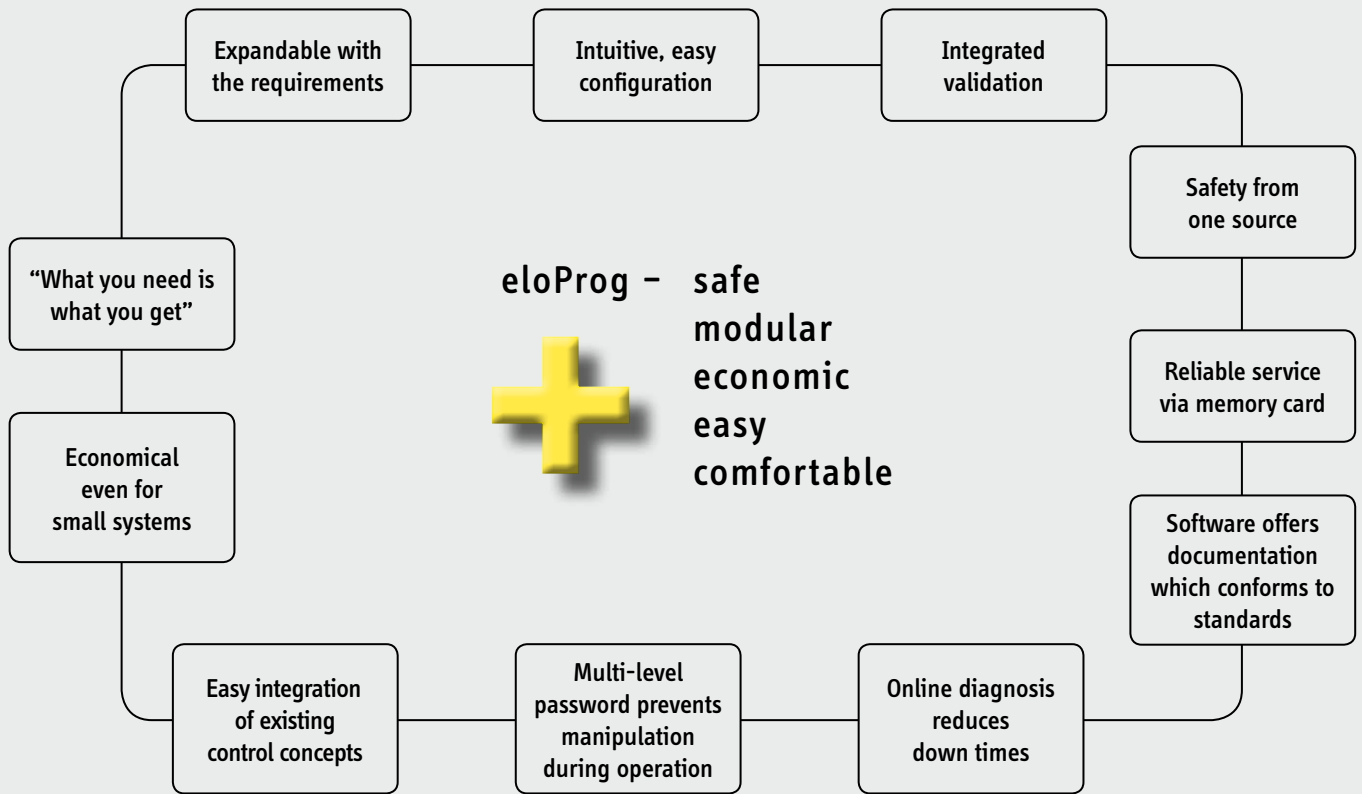


eloProg – the modular safety solution

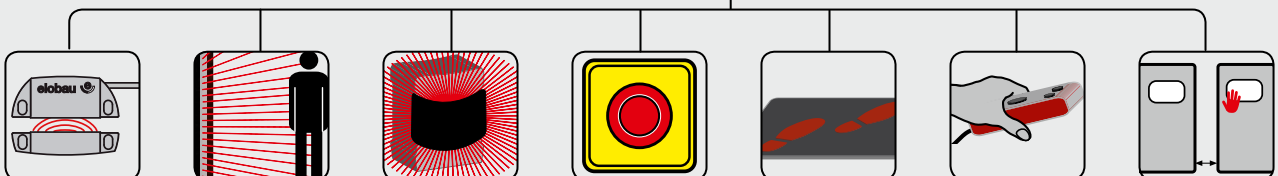
Monitors. Diagnoses. Communicates.

eloProg – the modular safety solution...

For enhanced safety with the highest possible flexibility



eloProg manages all safety components – safely



...for every application



Printing industry,
paper industry



Timber industry
+ Sawmills
+ Pelleting systems



Systems for
generating energy
+ wind power
+ solar power
+ hydroelectric power
stations



Chemical industry,
pharmaceutical industry,
cleanrooms



Packaging industry,
beverage industry



Food industry



Logistics

Monitors, diagnoses,
communicates - everywhere

eloProg -
certified safety

Would you like more
information?



Order your personal copy
of our catalogue "Machine
Safety" at www.elobau.com
or info@elobau.de



At www.elobau.com you can configure a suitable
module for your application and make inquiries
directly.

485EP. eloProg modules

Maximum safety for your system

eloProg input expansions 485EPE08, 485EPE12 and 485EPE16

- + 8 safety inputs (485EPE08)
- + 12 safety inputs (485EPE12)
- + 16 safety inputs (485EPE16)
- + 4 test outputs for sensor monitoring
- + 8 test outputs to monitor sensors for connecting up to four safety mats

The input expansions make 8, 12 or 16 additional safety inputs respectively available. Up to 4 extensions can be connected to the base module. This way, a maximum number of 128 safety inputs can be achieved.



eloProg base module 485EPB

- + 8 safety inputs
- + 2 safe transistor outputs (pairs) / 400 mA
- + 4 test outputs for sensor monitoring
- + 2 control outputs
- + 2 EDM (External Device Monitoring) (start/restart)

The base module is a configurable safety controller that can be used as stand-alone device. Communication with additional modules is accomplished through an internal high-speed bus. The configured safety function can be transferred directly via USB interface. The base module also features a memory card slot.

eloProg output expansions 485EPA02 and 485EPA04

- + 2 safety outputs (485EPA02) (pairs) / 400 mA
- + 4 safety outputs (485EPA04) (pairs) / 400 mA
- + 2 control outputs
- + 2 EDM (External Device Monitoring) (start/restart)

The output expansion extends the number of safe OSSD outputs (output signal switching device) in steps of two or four. This way, the maximum number of OSSD safety inputs can be increased to 16 pairs.

eloProg input /output module 485EPE08A02

- + 8 safety inputs
- + 2 safe transistor outputs (pairs) / 400 mA
- + I/O expansion
- + 4 test outputs for sensor monitoring
- + 2 control outputs
- + 2 EDM (External Device Monitoring) (start/restart)

The input/output module expands the inputs and outputs, the test outputs and control inputs of the base module.



eloProg relay modules 485EPR02 and 485EPR04

- + 2 relay outputs (485EPR02) 6 A / 250 V AC
- + 4 relay outputs (485EPR04) 6 A / 250 V AC
- + 1 or 2 NC feedback contacts

The relay modules have 2 NO + 1 NC or 4 NO + 2 NC force-guided relay contacts. These are each capable of handling 6 A and 250 V AC. To permit monitoring, the modules feature one or two additional NC contacts.



eloProg 485EPT. bus transfer module

- + decentralized positioning of eloProg I/O modules
- + simple connection via screw terminals
- + low wiring effort and expense due to bus connection
- + bus cable length of up to 100 m
- + up to six module stations
- + bus transfer modules do not count as expansion modules

The 485EPT. bus transfer modules enable the decentralized positioning of eloProg I/O modules. The 485EPT1 module is for the beginning and end and type 485EPT2 for the middle of the bus connection. Thus, up to six eloProg module stations with a maximum bus length of 100 m can be implemented.



eloProg fieldbus modules 485EPFPD, 485EPFDN, 485EPFCO, 485EPFEC, 485EPFEI, 485EPFPN

- + Profibus DP
- + EtherCat
- + DeviceNet
- + Ethernet IP
- + CANopen
- + Profinet

USB interface module 485EPFUB

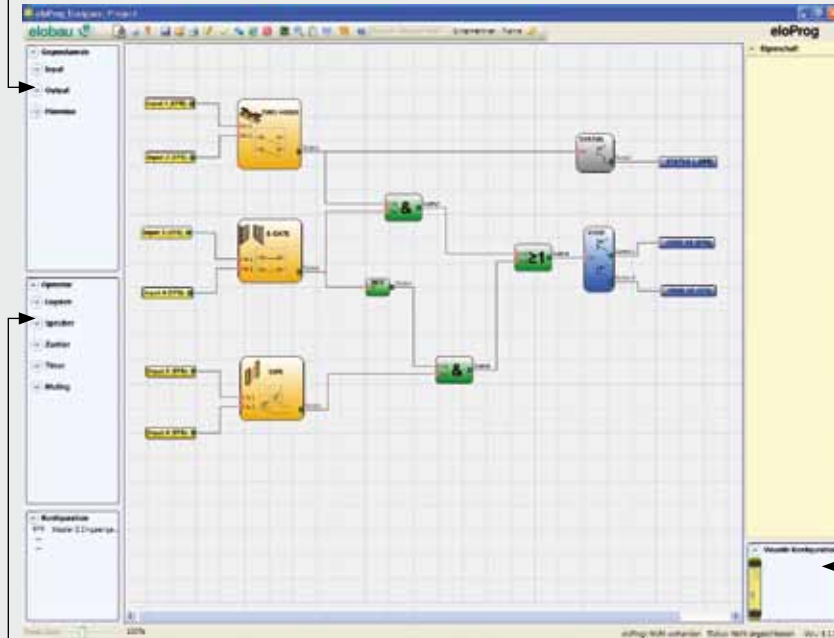
The fieldbus modules enable direct connection to the PLC.



Intuitive software

For easy configuration

Library of safety functions



Function blocks

Configuration of the respective block

- + Very user-friendly configuration software
- + All parameters can be configured via existing function blocks
- + All safety functions can be added by Drag & Drop
- + The finished project can be tested with the integrated validation function
- + 2 level password offers the planner protection from unauthorized access, while system users can work with the project with a level 1 password
- + Real-time monitoring of the I/O status via USB interface

The eloProg safety functions



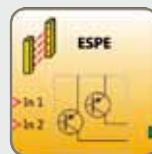
E-STOP checks the status of the In_x inputs of an E-STOP device. Detection of potential short circuits via the test signal. Configurable inputs: 1 NC or 2 NC.



E-GATE (for moveable guards) checks the status of the In_x inputs of a device for moveable guards or safety passes. Detection of potential short circuits via the test signal. Configurable inputs: 2 NC or 1 NC + 1 NO.



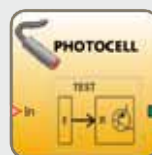
ENABLE (activation key) checks the status of the In_x inputs of a device with a key. Detection of potential short circuits via the test signal. Configurable inputs: 1 NO or 2 NO.



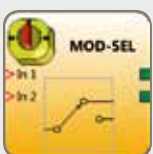
ESPE (light barrier) checks the status of the In_x inputs of a safety light barrier or of a laser scanner with two OSSD outputs.



FOOTSWITCH (safety pedal) checks the status of the In_x inputs of a safety device with a pedal. Detection of potential short circuits via the test signal. Configurable inputs: 1 NC or 1 NO or 2 NC or 1 NO + 1 NC.



PHOTOCELL (safety photocell) checks the status of an input of a non-automatically controlled optoelectronic safety photocell.



MOD-SEL (safety switch) checks the status of the In_x inputs of a mode selector (up to 4 inputs). Configurable inputs for 2, 3 or 4 positions.



TWO-HAND (two-handed control) checks the status of the In_x inputs of a two-handed control device. Detection of potential short circuits via the test signal. Configurable inputs: 2 NC or 2 NO + 2 NC.

eloProg accessories

eloProg memory card 350EPS

- + simple data transmission
- + without a PC

With the memory card, configuration data can be transmitted without a PC to another base module.



eloProg T connector 350EPT

- + 5-channel high-speed bus
- + thanks to plug connections, no wiring necessary

The T connector connects the individual modules in a way which saves space. The modules communicate via a proprietary 5-way high-speed bus. Therefore, additional wiring is not necessary.



eloProg 350EPU USB cable

- + simple data transmission with use of PC

The base module can be connected to the PC with the 3 m long USB cable.



eloProg - all modules at a glance

Type	Module	In _x functions	Out _x functions	Order number
485EPB	eloProg base module	8 safety inputs	2 safe transistor outputs (pairs)	485EBP
485EPE08A02	eloProg input/output module	8 safety inputs	2 safe transistor outputs (pairs)	485EPE08A02
485EPE08	eloProg input module	8 safety inputs		485EPE08
485EPE12	eloProg input module	12 safety inputs		485EPE12
485EPE16	eloProg input module	16 safety inputs		485EPE16
485EPA02	eloProg output module		2 safe transistor outputs (pairs)	485EPA02
485EPA04	eloProg output module		4 safe transistor outputs (pairs)	485EPA04
485EPR02	eloProg relay module		2 relay outputs 2 × 2 NO + 1 NC	485EPR02
485EPR04	eloProg relay module		4 relay outputs 4 × 2 NO + 1 NC	485EPR04
485EPT1	eloProg bus transfer module			485EPT1
485EPT2	eloProg bus transfer module			485EPT2
485EPFPD	eloProg fieldbus module		Profibus DP	485EPFPD
485EPFDN	eloProg fieldbus module		DeviceNet	485EPFDN
485EPFCO	eloProg fieldbus module		CANopen	485EPFCO
485EPFEC	eloProg fieldbus module		EtherCat	485EPFEC
485EPFEI	eloProg fieldbus module		Ethernet IP	485EPFEI
485EPFPN	eloProg fieldbus module		Profinet	485EPFPN
485EPFUB	eloProg interface module		USB	485EPFUB
350EPS	eloProg memory card	Easy transmission / overwriting of configurations		350EPS
350EPT	eloProg T connector	Bus connection of the individual modules		350EPT
350EPU	eloProg USB cable, 3 m long	Data transmission and real-time monitoring		350EPU



GmbH & Co. KG
Zeppelinstr. 44
88299 Leutkirch
Germany

(+49 (0) 7561 97 00
☎ +49 (0) 7561 97 01 00
www.elobau.com
info@elobau.de